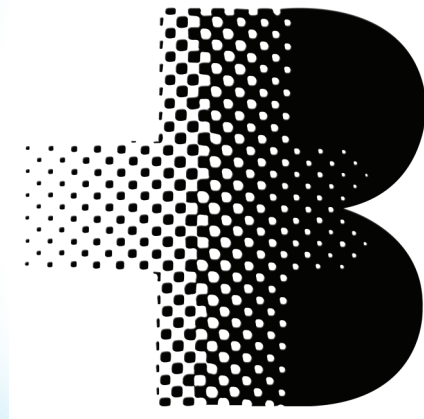
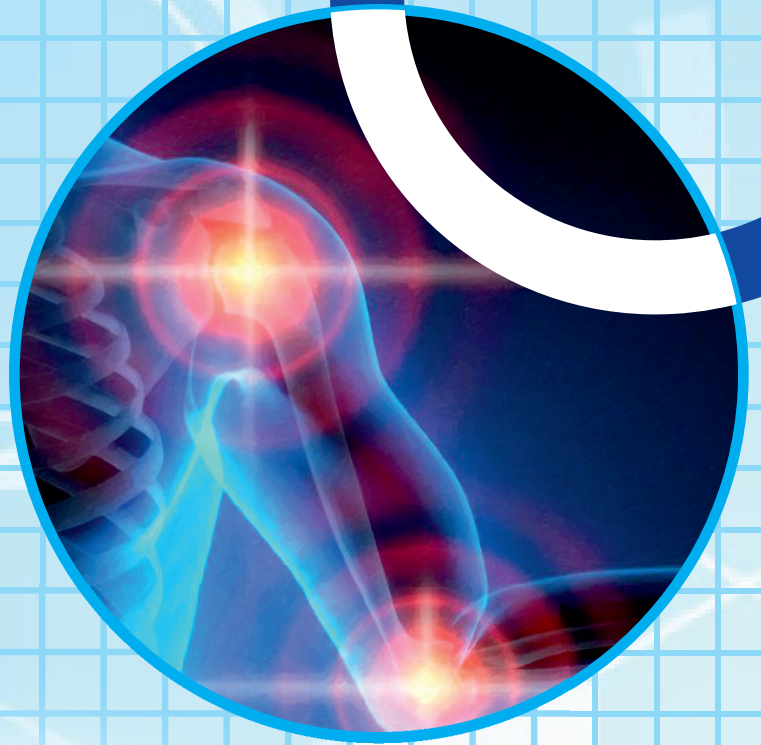


# BIOMED ORTHOPEDICS

TOTAL ORTHOPEDIC SOLUTIONS



**Biomed Healthtech (P) Ltd.**



Marthanda 207,  
2<sup>nd</sup> Floor,  
Dr. A. B. Road,  
Worli Naka,  
Mumbai – 400 018.



+91 97400 69305 | 91 98700 00708  
022 - 43339200



biomedorthopedics@gmail.com



www.biomedorthopedics.com



# Locking Plates & Screws



Small LCP Plate - 3.5mm



Small T Plate - 3.5mm



T Oblique Plate - 3.5mm



Distal Humerus Without Support Plate - 3.5mm



Locking Distal Humerous Plate With Support - 3.5mm



Distal Humerus Extra Articular Plate - 3.5mm



Proximal Humerus Philos Plate - 3.5mm



Clavical Plate - 3.5mm



Locking Calavical Hook Plate - 3.5mm



Clavicle Lateral Extension - 3.5mm



Proximal Tibia Plate - 3.5mm



Locking Lateral Tibia Plate Right - 5mm



Locking Small Plate - Titanium - 3.5mm



Lateral Tibia Plate - Titanium - 5mm



Distal Femur Plate - Titanium - 3.5mm



# Locking Plates & Screws



Posterior Medial Proximal Tibia Plate - 3.5mm



Medial Distal Tibia Plate - 3.5mm



TI Bone Plate For Patella - 3.5mm



TI Proximal Femur Gt Locking Plate Left - 3.5mm



TI Proximal Humerus Locking Plate Right - 3.5mm



TI Trochanteric Plate For PFN 4 Holes - 3.5mm



TI High Tibial Osteotomy Plate With Support - 3.5mm



High Tibial Osteotomy Plate Without Support - 3.5mm



Locking Fibula Plate - 3.5mm



Distal Radius Dorsal L Plate - 2.4mm



Distal Radius Volar T Plate - 2.4mm



Distal Radius Volar Variable Angle Plate - 2.4mm



TI Volar Distal Radius Dlx Locking Plate Wide - 2.4mm / 2.7mm



Distal Radius Volar Variable Angle Plate - 3.5mm



Distal Radius Volar T Plate - Titanium - 2.4mm



# Locking Plates & Screws



Distal Radius Dorsal T Plate  
- 2.4mm



Distal Radius Variable Angle Plate  
- 2.4mm



DHS Plate Round Hole



Locking DHS Plate - 4.5mm



Distal Radius Dorsal Straight Plate  
- 2.4mm



L - Buttress Plate - 4.5mm



T - Buttress Plate - 4.5mm



Distal Femur Plate - 4.5mm



Locking Reconstruction Plate  
- 3.5mm / 4.5mm



Narrow LCP - 5mm



Narrow DCP - 4.5mm



Reconstruction Plate - Round Hole  
- 3.5mm



LC-DCP Plate - 3.5mm



Medial Distal Humerus Plate  
- 3.5mm



Distal Fibula Plate - 3.5mm



# SS & Titanium Screws



Locking Screws - 3.5mm



Locking Screws - 5mm



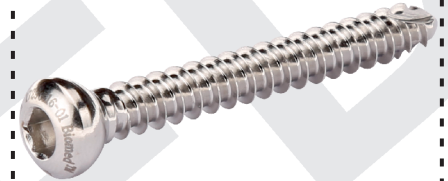
Locking Cancellous Screws - 4mm



Locking Cancellous Screws - 5mm



Cortical Screws - 3.5mm



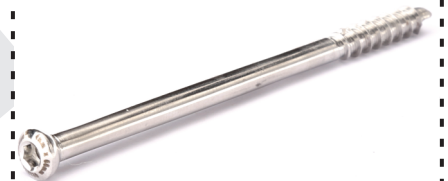
Cortical Screws - 4.5mm



Locking Screws - 2.4mm



Malleolar Screws - 3.5mm



Cancellous Screws (ST) - 4mm



Cancellous Screws (FT) - 4mm



16mm Cancellous Screws - 6.5mm



32mm Cancellous Screws - 6.5mm



Cancellous Screws (FT) - 6.5mm



Cannulated Cancellous Screws (ST) - 4mm



Cannulated Cancellous Screws (FT) - 4mm



# SS & Titanium Screws



16mm Cannulated Cancellous Screws - 6.5mm



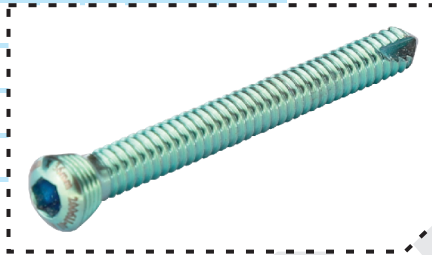
32mm Cannulated Cancellous Screws - 6.5mm



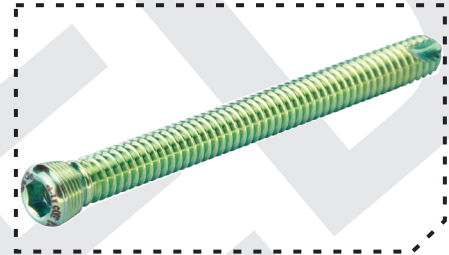
Cannulated Cancellous Screws (FT) - 6.5mm



DHS Screw



Locking Screw - Titanium - 2.4mm



Locking Screw - Titanium - 5mm



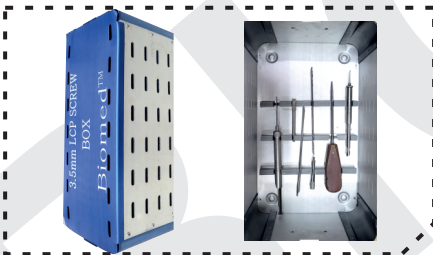
Cortical Screw - Titanium - 2.4mm



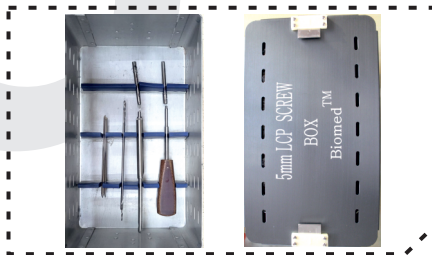
Cortical Screw - Titanium - 3.5mm



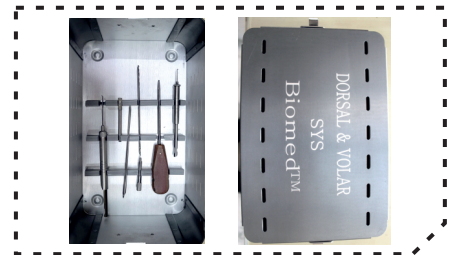
Cancellous - Titanium - 4mm



Locking Instrument Box - 3.5mm



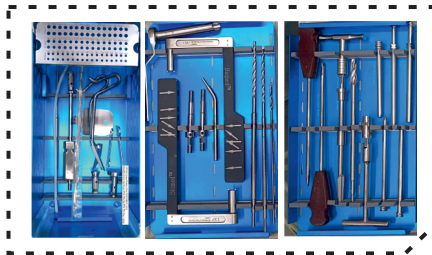
Locking Instrument Box - 5mm



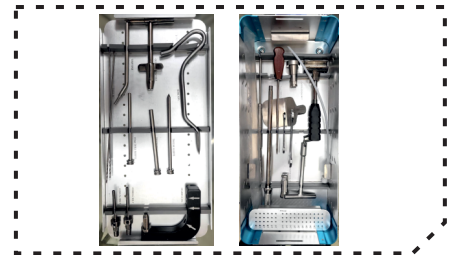
Locking Instrument Box - 2.4mm



Tibia / Femur Instrument Box



P.F.N Instrument Box



Humerus Instrument Box



# Interlocking Nails



Tibia Nail



Femur Nail



Proximal Femur Nail (PFN)



TFN Nail



Interlocking Bolt - 4.5mm



PFN Cannulated Bolt - 8mm



PFN Cannulated Bolt - 6.4mm



# Hip Prosthesis



Fixed Bipolar



Modular Bipolar



Modular Heads / Balls - SS



Modular Bipolar Instrument Set

# Spine And ACL Implants - Titanium



Cage



Anterior Cervical Plate



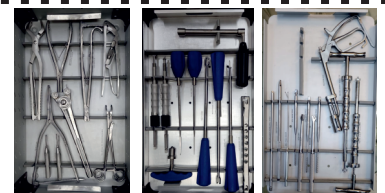
Rod



Monoaxial



Polyaxial



Spine Set

**Biomed Healthtech (P) Ltd.**

Marthanda 207, 2<sup>nd</sup> Floor, Dr. A. B. Road, Worli Naka, Mumbai – 400 018.